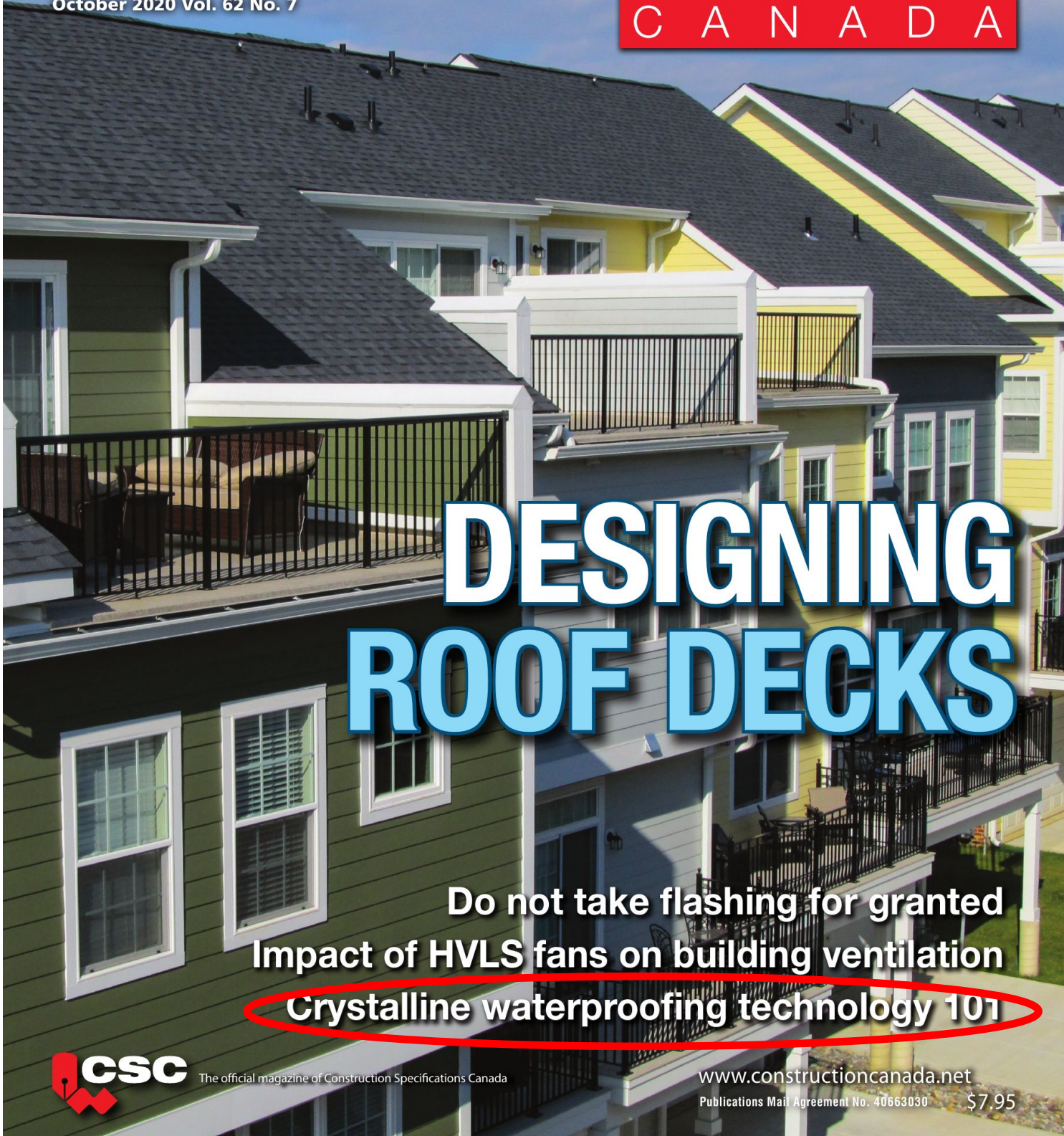


# CONSTRUCTION

October 2020 Vol. 62 No. 7

C A N A D A



## DESIGNING ROOF DECKS

Do not take flashing for granted  
Impact of HVLS fans on building ventilation  
**Crystalline waterproofing technology 101**

**CSC** The official magazine of Construction Specifications Canada

www.constructioncanada.net  
Publications Mail Agreement No. 40663030 \$7.95



OCTOBER 2020, VOL. 62, NO. 7  
**CONSTRUCTION**  
 C A N A D A

[www.constructioncanada.net](http://www.constructioncanada.net)

The Official Publication of Construction Specifications Canada  
 La publication officielle de Devis de Construction Canada

**EDITORIAL**  
**Editorial Director**  
 Blair Adams  
**Editor**  
 Nithya Caleb  
**Assistant Editor**  
 Sadia Badhon

**EDITORIAL ADVISORY BOARD**  
 Colleen Barabonoff, RSW, LEED AP  
*Book Spec Inc.*  
 John Cooke, FCSC, RSW, P.Eng.  
*John G. Cooke & Associates Ltd.*  
 Claude Giguère, Eng., FCSC, LEED AP  
*Pageau Morel*  
 Corinne Golding, FCSC, RSW  
*Corinne Golding Specifications Inc.*  
 Steve Londry, DipAT (Hon), BArch, LEED AP  
*Construction Specification Solutions*  
 Keith Robinson, FCSC, RSW, CCS, LEED AP  
*DIALOG*  
 Sandro Ubaldino, FCSC, RSW  
*NORR*  
 Abigail MacEachern, NSAA, RSW, LEED AP, CDT  
*Pomerleau*  
 David Egan, FCSC, RSW  
*David Egan Associates Inc.*  
 George McCutcheon, AIBC, LEED AP, CSP  
*HCMA Architecture + Design*

**KENILWORTH MEDIA INC.**  
**Publisher/CEO**  
 Erik Tolles  
**Chief Financial Officer**  
 Philip Hartung  
**Senior Director of Operations**  
 Krista Taylor  
**Director of Business Development**  
 John MacPherson  
**Accounting Manager**  
 John Zhai  
**Accounting Assistant**  
 Audrey Tang  
**Administrative Assistant**  
 Helen McAuley

**HOW TO REACH US**  
 15 Wertheim Court, Suite 710, Richmond Hill, ON L4B 3H7; (905) 771-7333

**SPEAK TO THE EDITOR**  
 We want to hear from you! Please e-mail editorial inquiries, story pitches, press releases, and letters to the editor to: [ncaleb@constructioncanada.net](mailto:ncaleb@constructioncanada.net)

**SUBSCRIPTION**  
 To subscribe to *Construction Canada*, call: (800) 409-8688;  
 E-mail: [circulation@constructioncanada.net](mailto:circulation@constructioncanada.net)

**Rates**  
 Canada 1 year: \$56.00 (incl. taxes)  
 U.S. 1 year: \$88.00 US  
 Foreign 1 year: \$120.00 US  
 Publications Mail Agreement #40663030

**Postmaster:** Return undeliverable Canadian addresses to: Kenilworth Media Inc. 15 Wertheim Court, Suite 710, Richmond Hill, ON L4B 3H7  
 Tel: (905) 771-7333; Fax: (905) 771-7336

**REPRINTS**  
 To order a customized reprint, contact Jill Kaletha at Mossberg & Co.  
 Tel: (800) 428-3340, ext. 149; e-mail: [jkaletha@mossbergco.com](mailto:jkaletha@mossbergco.com)

*Construction Canada* (ISSN 0228-8788) is published nine times a year for Construction Specifications Canada by Kenilworth Media Inc., 15 Wertheim Court, Suite 710, Richmond Hill, ON L4B 3H7

Contents of *Construction Canada* are copyrighted and may not be reproduced without the written consent of Kenilworth Media Inc. The publisher shall not be liable for any of the views expressed by the authors of articles or letters published in *Construction Canada*, nor shall these opinions necessarily reflect those of the publisher or Construction Specifications Canada.

This magazine is strictly for information purposes only. The content and expert advice presented are not intended as a substitute for informed professional advice. No action should be taken on information contained in this magazine without first seeking specific advice from a qualified professional.

The electronic addresses contained in this magazine are for inquiring about a company's products and/or services or to contact an author, and not to be used for sending unsolicited marketing or promotional messages.

Printed in Canada



# Contents

## On the Cover



Whether in single-family homes or commercial residential properties, maximizing useable square footage is always an advantage. Roof decks can be a stand-out feature in a competitive, urban marketplace.

Photo courtesy Duradek.  
 See article on page 10

## Features



### 10 Exploring the Rising Demand for Recreational Roof Decks

*Jennifer Ogilvie Brackett and Kim Smallwood*

An outdoor living space is one of the most desired areas of a home. Contributing factors are a growing staycation mentality and a preference for healthy lifestyle choices. Therefore, incorporating outdoor living spaces with rooftop decks is a smart investment.



### 20 Utilizing HVLS Fans to Disinfect Indoor Air

*Alex Risen*

Using an overhead high-volume, low-speed (HVLS) fan's bi-directional airflow and elevated air speed is a powerful way to improve ventilation, thereby reducing the concentration of airborne pathogens through dilution. Occupant comfort can be assured in applications ranging from non-conditioned industrial spaces to commercial buildings.



### 28 Protecting Concrete with Crystalline Waterproofing Technology

*Dave Ross*

Concrete is susceptible to fluid and vapour infiltration and migration. Crystalline waterproofing technology improves the durability of the concrete by filling and plugging pores, capillaries, and micro-cracks with a non-soluble, highly resistant crystalline formation.

## Departments

Tools of the Trade . . . . . 6      Message from the President . . . . . 34  
 Steven Fechino      Wyatt Eckert

# CONSTRUCTION PRODUCTS

C A N A D A

Access the latest building product info with our comprehensive library on [www.constructioncanada.net](http://www.constructioncanada.net). Whether insulation or concrete, roofing or mechanical, all product information is served in context with the content you're reading.

To get started, go to [www.constructioncanada.net/products](http://www.constructioncanada.net/products)





Images courtesy Xypex Chemical Corp.

May Bank foundation  
concrete pour in Kuala  
Lumpur, Malaysia.

# Crystalline Waterproofing and Protection for Concrete

By Dave Ross

Concrete has been used for thousands of years and is the most widely used building material in the world. According to the Cement Association of Canada (CAC), more than twice as much concrete is used in construction around the world than the total of all other building materials, including wood, steel, plastic, and aluminum.

Yet, despite its apparent solidity, strength, and durability, concrete is porous and permeable to fluid and vapour infiltration and migration. Water and dissolved chemicals, such as chlorides, sulfates, and acids, can penetrate deep into concrete, sometimes resulting in premature damage, such as reinforcing steel corrosion, freeze/thaw cracking, spalling, and chemical attack.

Added to this 'natural' porosity is the fact newly poured concrete develops cracks. This can be due to excess water, rapid drying, improper strength, settlement, and shrinkage. When it comes to building foundations, elevator pits, water/

wastewater treatment and water containment structures, and many other applications, waterproofing and protecting the concrete is critical.

## The porous and permeable nature of concrete

Concrete is a mixture of rock, sand, cement, and water. Rock and sand form the aggregate base of the concrete. The mixture of cement and water provides a paste, which binds the aggregates together. As the cement particles hydrate and form calcium silicate hydrates, the whole mixture hardens into a solid, rock-like mass.

To make this mixture workable, easy-to-place, and consolidate, more water than necessary is used to hydrate the cement. This extra water, known as the water of convenience, bleeds out of the concrete, leaving behind pores and capillary tracts.



Despite the use of admixtures to reduce the amount of water in the mix, pores, voids, and capillary paths form in the concrete. They carry water and aggressive chemicals that corrode steel reinforcement and deteriorate the concrete, thus jeopardizing the structure's integrity.

Porosity is the amount of holes or voids left in concrete, expressed as a percentage of the total volume of a material. Since it is porous, concrete is also permeable.

Permeability—a broader term than porosity—is an expression of how well the voids are connected, providing the ability of water to flow through a material. Together, these pathways allow the movement of water into and through the concrete. Permeability is described by a quantity known as the 'permeability co-efficient,' also called Darcy's Co-efficient. The water permeability of concrete is a good indicator of its quality and durability. The lower the permeability co-efficient, the more impervious the concrete and the higher its quality and performance. Nevertheless, concrete with low permeability may still need a waterproofing agent to seal micro-cracks.

### Vapour flow in concrete structures

Water can also migrate through concrete in the form of vapour. The flow travels from high vapour pressure, generally the source, to low vapour pressure by a process of diffusion and can vary based on environmental conditions.

Vapour flow direction is critical when applying a waterproofing treatment in situations where an unbalanced vapour pressure gradient exists. Some typical examples of this are as follows:

- applying a low vapour permeable membrane, such as a traffic deck coating over a damp concrete surface (even if the very top surface is dry) on a warm day results in the buildup of vapor pressure and pin-holing or blistering;
- adding a coating or sealant to the outside of a building wall may trap moisture if the sealant is not sufficiently vapour permeable; and
- installing low vapour permeable flooring over a slab-on-grade with high subsurface moisture content may result in delamination.

As a general rule, a coating with low vapour permeability should not be placed on the downstream face (negative or dry side). Either vapour or water pressure will 'push' the coating from the surface, causing it to blister. Some types of coatings (e.g. cement-based ones) and water permeability-reducing admixtures accommodate considerable vapour movement, thus allowing them to be placed successfully on the downstream side.

### How crystalline waterproofing works

Crystalline waterproofing technology improves the waterproofing and durability of concrete by filling and

plugging pores, capillaries, and micro-cracks with an insoluble, highly resistant crystalline formation. The process is based on two simple properties—one chemical and the other physical.

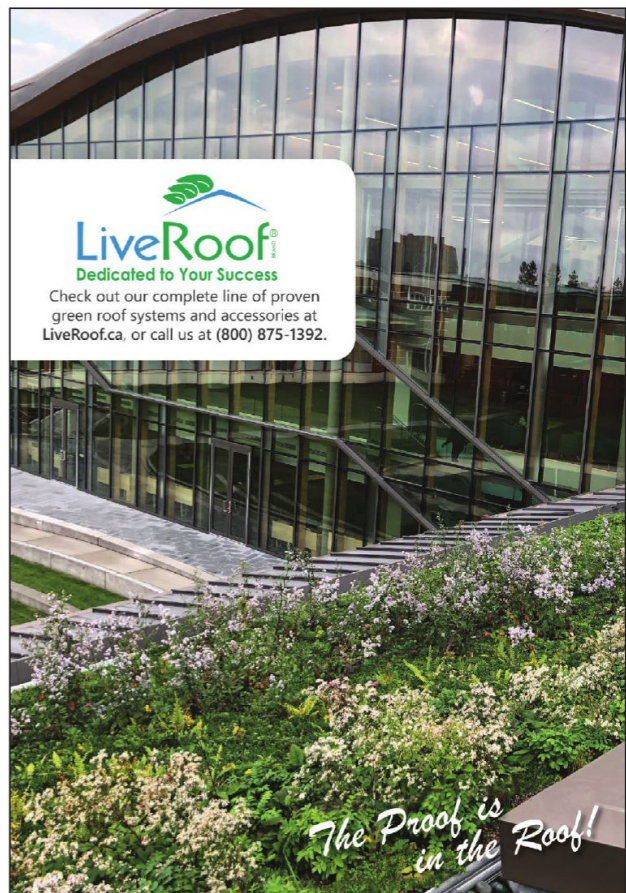
Concrete is chemical in nature. When a cement particle hydrates there is a reaction between water and the cement, which causes it to become a hard, solid mass, but there are also chemical byproducts given off that lay dormant in the concrete.

Crystalline waterproofing introduces a second set of chemicals. When these two groups are brought together (*i.e.* the byproducts of cement hydration and the crystalline chemicals) in the presence of moisture, a reaction takes place, resulting in the formation of an insoluble crystalline structure.

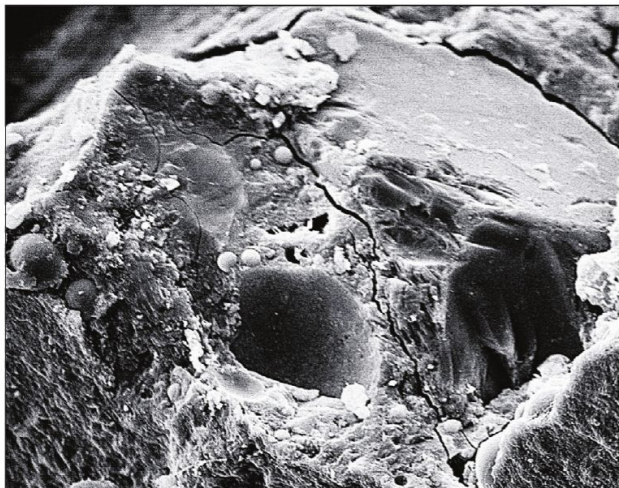
This crystalline structure can only occur where moisture is present, and thus, will form in the pores, capillary tracts, and shrinkage cracks in concrete. Wherever water can penetrate the concrete, the crystalline formation will follow.

When crystalline waterproofing is applied to the surface as a coating, a process called chemical diffusion takes place. The theory behind diffusion is a solution of high density migrates through a solution of lower density until the two equalize.

Water-filled capillary tracts contain a solution of low chemical density. When crystalline waterproofing is applied to







Magnified view of micro-crack.

this concrete a solution of high chemical density is created at the surface, triggering the process of diffusion. The crystalline waterproofing chemicals must now migrate through the water (the solution of low density) until the two equalize.

The crystalline waterproofing chemicals now spread through the concrete and become available to the byproducts of cement hydration, allowing the chemical reaction to take place and the formation of a crystalline structure. As chemicals migrate through water, this crystalline growth will form behind an advancing front of chemicals. This reaction continues until the crystalline chemicals are either depleted or run out of water.

Chemical diffusion can take these chemicals about 300 mm (12 in.) into a completely saturated concrete substrate. Where concrete is not completely saturated, the crystalline chemistry only diffuses to the depth of water saturation, but still has the potential to travel deeper into the concrete in the future if water penetrates from the opposite direction, thus reactivating the crystalline chemistry.

Instead of just reducing the porosity of concrete, like water reducers, plasticizers, and super plasticizers, the crystalline formation engages the material filling and plugs the voids in concrete to become an integral and permanent part of the structure.

Since the crystalline formation occurs within the concrete it cannot be punctured or otherwise damaged like membranes or surface coatings. Crystalline technology also improves the durability of concrete structures, lowering their maintenance cost and extending their lifespan by protecting them against the effect of aggressive chemicals. Crystalline waterproofing is resistant to chemicals where the pH range is between three and 11 under constant contact and two to 12 under periodic contact. Crystalline waterproofing tolerates temperatures between  $-32\text{ C}$  ( $-25\text{ F}$ ) and  $130\text{ C}$  ( $265\text{ F}$ ) in a constant state.

Humidity, ultraviolet (UV) light, and oxygen levels also have no impact on the material's ability to perform.

Crystalline waterproofing offers enhanced protection against the following agents and phenomena.

#### *Carbonation*

This is the result of the dissolution of carbon dioxide ( $\text{CO}_2$ ) in the concrete pore fluid, which reacts with calcium from calcium hydroxide and calcium silicate hydrate to form calcite ( $\text{CaCO}_3$ ). This process reduces the pH of concrete and its natural protection of reinforcing steel.

#### *Alkali aggregate reactions*

By denying water to these processes, crystalline waterproofing helps prevent these types of swelling reactions.

#### *Chloride attack*

Extensive chloride-ion diffusion testing shows concrete structures protected with a crystalline waterproofing treatment slows the diffusion of chlorides, thus extending the time-to-corrosion of the reinforcing steel.

Due to their limitations, membranes and coatings may leave concrete susceptible to water and chemical damage. The addition of crystalline technology can seal the pores and micro-cracks.

### **Matching the right crystalline technology with the application**

Crystalline waterproofing and protection technology is sold in powder form and is mixed with water. It can be used in two ways:

- as a coating applied to the surface of existing or new concrete structures, such as foundation walls, floor slabs, or the inside of underground structures; and
- an admixture added directly into the concrete batch at the plant or truck for new construction, shotcrete, and precast applications.

#### **Crystalline waterproofing coating**

As mentioned earlier, when applied to clean, bare, and previously saturated substrate as a slurry mixture, the reactive chemical ingredients in crystalline waterproofing can penetrate up to 300 mm deep inside the concrete by using water as the migrating solution. As these chemicals penetrate through the capillaries and pores, the reaction with the mineral byproducts of cement hydration creates the crystalline formation that eventually fills the cracks and pores.

Crystalline waterproofing can be applied by a brush or with spray-on equipment. To ensure the success of the application, care must be taken to ensure correct surface preparation, substrate saturation, coverage rate, and curing time.



Since the crystalline waterproofing coating system has a unique chemical diffusing characteristic, proper surface preparation of the concrete is critical to the performance of the treatment. Concrete surfaces need to have an open pore texture to allow the transfer of the reactive crystalline chemicals from the coating into the concrete substrate. The surface also needs to be clean and free of form oil, laitance, and other foreign matter to ensure proper adhesion of the coating.

### Crystalline waterproofing admixture

When used as an admixture the same chemical reactions take place, but cost is lowered by eliminating the labour associated with the application of a surface treatment. Additionally, the use of crystalline waterproofing as an admixture moves labour offsite, eliminating scheduling and delays.

Since the admixture is added to the concrete mix at the batch plant or a ready-mix truck, it ensures the crystalline formation occurs uniformly throughout the structure rather than penetrating from the surface as would be the case with a surface application. In addition to waterproofing, crystalline admixture can reduce shrinkage cracking as well as increase compressive strengths. This may be because the water is taken up into the crystalline structure, leading to a longer, internal moist cure that is beneficial for shrinkage reduction and compressive strength development. For most mix designs, the dosage rate is two to three per cent based on the Portland cement content.

While crystalline waterproofing admixture is compatible with super plasticizers, air-entraining agents, water reducers, fly ash, pozzolans, and other ingredients used to improve the performance of modern concrete mixes, it is best to check with the manufacturer to ensure there is no incompatibility with other elements of the concrete mix, particularly concrete set retarders.

### Negative-side waterproofing

Where existing underground structures are experiencing water seepage because of failed exterior membrane or coating systems, the problem can be remedied by the application of crystalline waterproofing on the negative side (inside) of the structure. Under these conditions, surface coatings—depending on the adhesion—blister and peel when moisture seeping through the concrete from the exterior dissolves soluble minerals and deposits them under the coating in the form of efflorescence. Since crystalline waterproofing penetrates into the concrete and plugs the pores beneath the surface, it stops water seepage in the concrete before it reaches the inside surface. This does not depend on its adhesion to the surface and will not blister and peel off like surface barriers.

Vapour transmission through basement floors and walls is also a common problem leading to unpleasant damp, musty odours. Testing in Japan and Europe has shown the application of crystalline technology can reduce vapour flows as much as 50 per cent by reducing the size of the capillary tracts in the concrete as well as making some of them discontinuous, which, in most cases, provide a drier, more pleasant atmosphere.

Crystalline waterproofing materials also have the ability to self-heal micro-cracks (<30 µm [1181 µin]) in the concrete substrate as well as macro-cracks up to 0.4 mm (16 mils) in width. The rate of self-healing is dependent on the size and nature of the crack (static or moving) and the hydrostatic pressure the crack may be subjected to. Self-healing can be evident in only a few days or as long as a few months depending on the ambient conditions.



## Air Curtains allowed as EXCEPTIONS to VESTIBULES!

Meet Energy Codes  
(ASHRAE Standard  
90.1-2019, IECC, IgCC)  
for main entrances with  
**AMCA Certified  
Berner Air Curtains.**



Visit [www.Berner.com](http://www.Berner.com)  
to learn more





*A protective layer of crystalline waterproofing is applied to the Valdez Marine Terminal water purifying tanks in Prince William Sound, Alaska.*

### Real-world examples

Several examples of how crystalline waterproofing technology products were used in real world construction applications situations are illustrated by the following projects.

#### *May Bank Headquarters*

The triple tower development designed as a new headquarter building for May Bank in Kuala Lumpur, Malaysia, involved diaphragm wall construction incorporating a nine-level underground parking garage. A crystalline technology admix (dosed at 3 kg/m<sup>3</sup> [0.19 lb/cf]) was selected for the project to assist with controlling hydration heat, reduce shrinkage cracking, give the slab the capacity to 'self-heal,' and waterproof the concrete as well as increase its strength and durability.

The basement slab required approximately 24,000 m<sup>3</sup> (847,552 cf) of crystalline admix-dosed mass concrete. Commencing on September 26, 1997, the initial pour of approximately 13,200 m<sup>3</sup> (466,154 cf) was conducted over a 60-hour period; it was then and remains today the third largest continuous pour conducted in the world and the largest in Southeast Asia.

#### *Valdez Marine Terminal*

Two coats of crystalline waterproofing were applied to the ballast water purifying facility's tanks at the Valdez Marine Terminal located at the end of the Trans Alaskan Pipeline System, Prince William Sound, Alaska. More than 25,000 m<sup>2</sup> (250,000 sf) of coating materials was applied to the two final water purifying tanks. The ballast water treatment system sends oily water through multiple processes to strip it of any hydrocarbons before it is released into the ecologically sensitive waters of Prince William Sound.

#### *Columbia College*

Columbia College is British Columbia's oldest university transfer college. The main campus is housed in a five-storey, 6782-m<sup>2</sup> (73,000-sf) building just east of Vancouver's

downtown core at 438 Terminal Avenue. The building has a one-level, below-grade parking garage falling just above the sea level from the nearby False Creek Inlet. Due to the local climate and high-water table, the structure was subject to ongoing groundwater and below-grade hydrostatic pressure.

To waterproof the foundation slab, walls, and elevator pit, without the uncertainty and extra labour of membranes or coatings, the designers chose a crystalline admixture to add to the 500 m<sup>3</sup> (17,657 cf) of ready-mix concrete required for the project. The crystalline admix was introduced at a two per cent dosage (based on the total weight of cementitious ingredients).

Crystalline waterproofing patching material and coating products were used in combination with a polyvinyl chloride (PVC) waterstop to permanently seal the joints where exterior walls landed on the slab. Additionally, crystalline waterproofing admix was also used as a modified grout to ensure a well-consolidated wall/slab interface. Once completed, all walls and joints in the foundation structure were dry and free of leaks.

### Other applications

Crystalline waterproofing admix is also used by precast concrete producers to add value and enhance the performance of concrete pipes, manholes, septic tanks, and architectural panels. Apart from waterproofing these products, crystalline technology enhances chemical resistance and reduces shrinkage cracking, thus prolonging service life. Since it is sold in powder form, crystalline waterproofing can also be included in the mix design for bagged cement products such as shotcrete, mortar mixes, and stuccos.

### Conclusion

Although concrete may appear to be a simple product to manufacture, it requires a highly engineered approach. In today's design and construction environment, where more stringent requirements, such as longer life cycles, more durable concrete, and value-engineering concepts are expected, careful consideration must be paid to not only the basic requirements, such as the water/cement ratio and materials, but also to more sophisticated chemical admixtures. With its ability to reduce the porosity and permeability of conventional concrete, crystalline waterproofing technology is a valuable addition to building sciences. 📌



*David Ross is the technical services director for Xypex Chemical Corp. of Vancouver, a manufacturer of crystalline waterproofing materials. He can be reached at [dave@xypex.com](mailto:dave@xypex.com).*